

# CAP Planning & Implementing



Pope/Douglas  
Solid Waste Management  
(PDSWM)

## County Experience and Perspective

- Steve Vrchota, *Director*
- Nathan Reinbold, *Environmental Coordinator*

A stack of three books is visible on the right side of the image, resting on a wooden surface. The books have white and brown covers. A warm, golden light flare is present in the upper right background. The text is overlaid on the left side of the image.

—

- Clear, Concise Story

---

- Project Champions

# Story

- Long Range Facility Planning
- Regional Partners
- Clear, Concise Messaging Material
- Get the Story Out There

# PDSWM Project

---

\$18.9 Million Dollar Total Project

---

Critical Solid Waste Infrastructure

---

Seeking Grant of \$9 Million

---

Split into two Phases

---

Working on Funding for Phase 2

# Long-range Planning

- GBB Solid Waste Management Consultants – Plan/Site Evaluation (2018)
- Board Committee on Planning
- Funding Plan
- Land Assessment



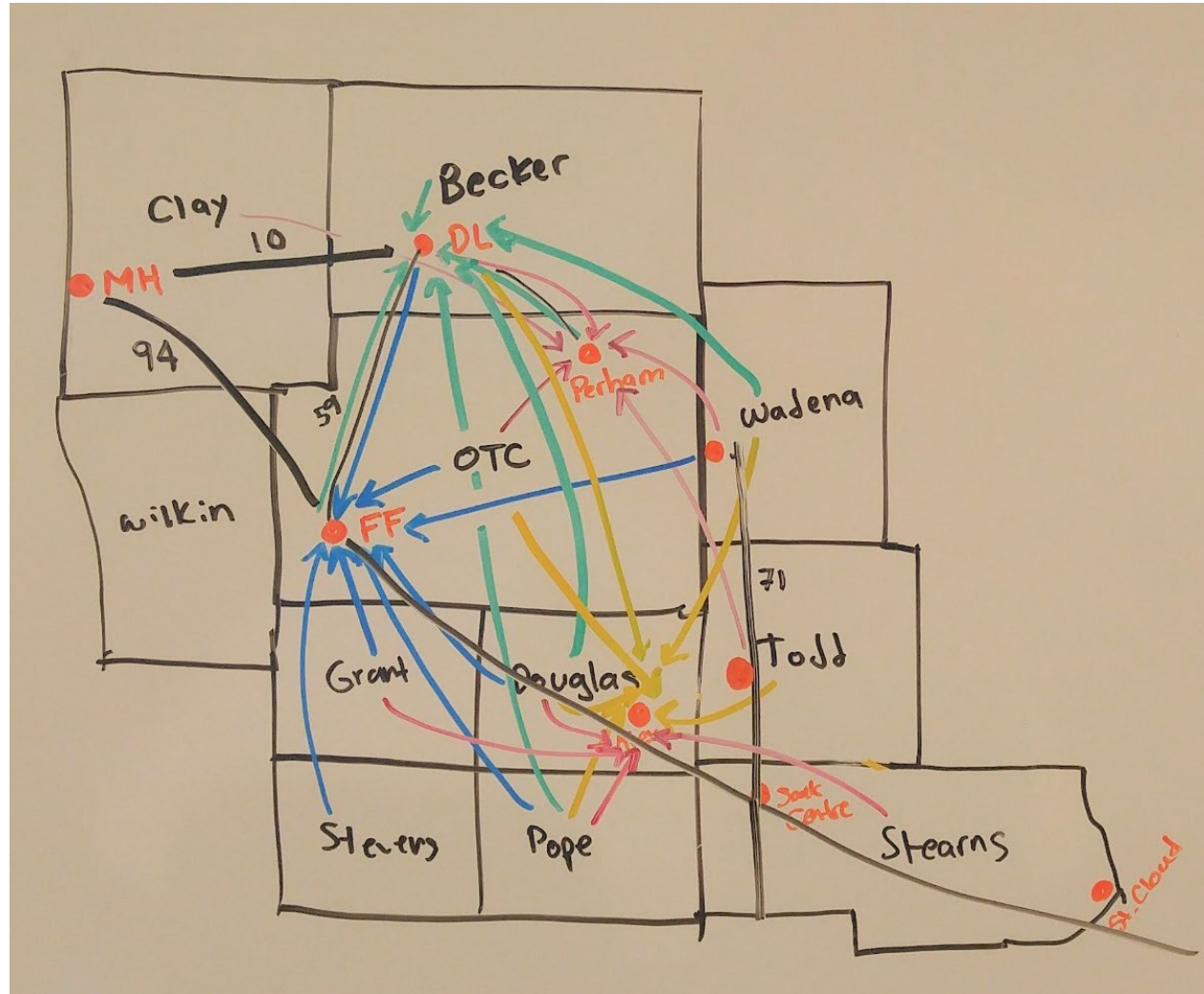
SOLID WASTE  
MANAGEMENT  
CONSULTANTS



MINNESOTA  
RESOURCE  
RECOVERY  
ASSOCIATION

Yesterday's Waste... Today's Energy

# Regional Waste Shed Planning 2015



# CAP Messaging (Marketing)

- Site video with Drone footage showing the trouble spots (**the bad**)
- Legislative and community partner project 'sell sheets' (**the good** and proposed to fix the bad)
- Web Site Message
- Publicity and Press

# Marketing Site Video

<https://youtu.be/HAC5oAHsInM>

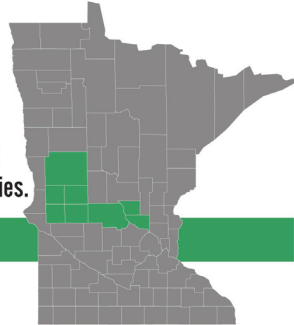




# Legislative Marketing Sheet

## 8 County Regional Waste Diversion System HF3337

Creating a model Greater MN unified waste diversion, recycling and composting system to meet the growing regional needs of 8 counties.



### Project Summary

**Applicant** Pope/Douglas Solid Waste Management (Government Joint Powers)  
**Project Partners** Counties of Douglas, Pope, Otter Tail, Grant, Stevens, Stearns, Benton, Sherburne  
**Project Location** Alexandria and Hoffman (Central/West Central MN)  
**Total Project Cost** \$18.9 Million **Requested Bonding Amount** \$9 Million **Local Contribution** \$9.9 Million

### Project Description

This project will retrofit and expand existing waste diversion/recycling processing facility, construct a regional organics composting/processing facility, and construct an environmental center which houses recycling/household hazardous waste functions - including problem material management, emerging waste/recycling programs, reuse/refurbish programs and public waste diversion education.

This is a shovel-ready project designed to replace aging and undersized public infrastructure with flexibility built in to meet the needs of the community for the next 30+ years.

### Material Recovery Facility

Retrofit and Expand Existing Regional Front-end Materials Recovery/Waste Diversion Facility.

- Facility pre-sorts/processes all incoming wastes – removing recyclable and problem materials.
- Improved safety for residents, haulers and employees.
- Robotics and enhanced equipment will recover additional recyclables from the incoming raw garbage.

### Organics Composting Facility

Construct a Regional Organics Composting/Processing Facility.

- Increases recycling rate and landfill/waste-to-energy diversion.
- Environmentally preferable compared to landfilling or placing organics in sewer system.
- Designed to process 2,500 tons/year.
- Future flexibility to process up to 15,000 tons/year.

### Environmental Center

Construct Regional Household Hazardous Waste Facility.  
 Construct Recycling, E-Waste and Problem Materials Recycling Facility.

- Reuse/refurbish/education space to empower community waste diversion and learning.
- Designed to handle growing community needs – with room built in for growth.
- Process up to 3,000 tons/year



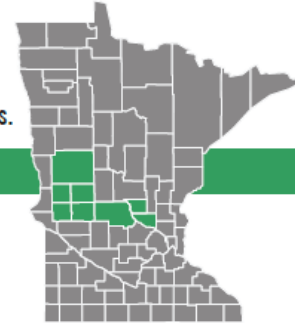
Check out *our* vision



popedouglasrecycle.com

## Advanced Material Recovery Facility

Creating a model Greater MN unified waste diversion, recycling and composting system to meet the growing regional needs of 8 counties.



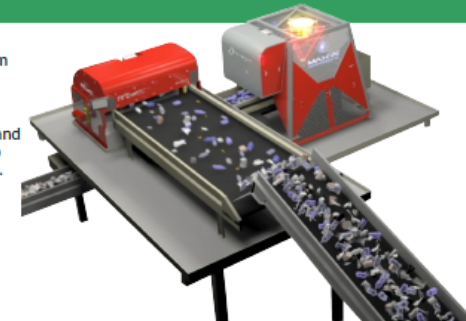
### Project Summary

**Applicant** Pope/Douglas Solid Waste Management (Government Joint Powers)  
**Project Partners** Counties of Douglas, Pope, Otter Tail, Grant, Stevens, Stearns, Benton, Sherburne  
**Project Location** Alexandria (Central Minnesota)  
**Total Project Cost** \$8.9 Million  
**Requested Bonding Amount** \$4 Million  
**Local Contribution** \$4.9 Million

### Project Description

This project will retrofit and expand the existing waste diversion/recycling processing facility - including problem material management and emerging waste/recycling programs.

This is a shovel-ready project designed to replace aging and undersized public infrastructure with flexibility built in to meet the needs of the community for the next 30+ years.



### Material Recovery Facility

Retrofit and Expand Existing Regional Front-end Materials Recovery/Waste Diversion Facility.

- Facility pre-sorts/processes all incoming wastes – removing recyclable and problem materials.
- Improved safety for residents, haulers and employees.
- Robotics and enhanced equipment will recover additional recyclables from the incoming raw garbage.
- Design for diverting 8% of raw garbage as recycling (up from current 2.5%).
- Process to recover organics recycling (with special co collection bags) from raw garbage.
- Plan for flexibility to incorporate equipment upgrades.

Total Phase 2 Cost  
\$8.9 Million

Total Grant Request  
\$4 Million

Local Contribution  
\$4.9 Million

Pope/Douglas  
Solid Waste Management

2115 Jefferson Street  
Alexandria, MN 56308

Steve Vrchota  
320-763-9340  
steve@popeandouglasrecycle.com

Pierre Willette  
D 651-717-4168  
C 612-578-7684  
pierre@goffpublic.com

Check out our vision



popedouglasrecycle.com



# Website Capture

320-763-9340 gogreen@popedouglasrecycle.com

Home About Us Job Openings Contact Us



Business Household Specialty Burns Events Grant Opportunities Community Links

Pope/Douglas Solid Waste Management > About Us > Facility Expansion Retrofit & Renovation

## Future Facilities & Upgrades

Pope/Douglas Solid Waste Management operates a fully integrated solid waste, recycling, pollution prevention and outreach/education system.

We are currently working with the Governor's Office, MN House and MN Senate to secure funding through the Capital Assistance Program (CAP).

These planned facility upgrades were extensively studied through third party consultants to assist the Pope/Douglas Joint Powers Board and Executive Director determine the best course of action to maintain our level of service to the community and region for the next 30 years.



[2020 CAP Grant Presentation – 8 County Partnership](#)

[Current Site Plan and Layout for Resource Recovery and Recycling Campus](#)

PHASE I Bonding Requests (**\$5 Million CAP Bonds Received in 2020**):

- Environmental Center (Household Hazardous Waste, Recycling, Problem Materials, Education, Administration)
  - Construction to begin spring of 2022.
- Scale House (Shipping/Receiving Area, Truck Scale, Truck Roads/Queuing Areas)
  - Construction to begin summer of 2021.
- Regional Organics Composting Facility (Office, Compost Processing Building)
  - Construction to begin summer of 2021.

PHASE II Bonding Request (**Currently Seeking \$4 Million in CAP Bonds in 2021**):

- Materials Recovery Facility (MRF)
  - Construction on hold until CAP Bonds are secured.

Phone: 320-763-9340  
Toll Free: 800-972-6318  
Fax: 320-763-9342

2115 Jefferson Street  
Alexandria, MN 56308

Office Hours  
Monday-Friday 8-12 and 1-4:30  
Closed Saturday and Sunday

Recycling Center Hours  
Monday-Friday 8-5  
Saturday 9-2  
Closed Sundays

Hazardous Waste Hours  
Monday-Friday 8-12 and 1-4  
Closed Saturday and Sunday  
No appointment necessary

Share With Others



320-763-9340 gogreen@popedouglasrecycle.com

Home About Us Job Opening



Business Household Specialty Burns Events Grant Opportunities Community Links

Pope/Douglas Solid Waste Management > About Us > Facility Expansion Retrofit & Renovation

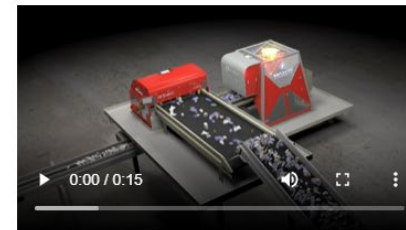
## Advanced Material Recovery Facility

Phase II Campus Plan: Advanced Material Recovery Facility

Phase II: Advanced Material Recovery Facility

Phase I: Environmental Center & Operations Support

Phase I: Regional Organics Composting Site



# Press Release

## County Approves CAP Grant for Pope/Douglas Solid Waste

By [marshall](#) - November 6, 2019 - MKRS/KKOK



Steve Vrchota with Pope/Douglas Solid Waste Management. (Photo: Marshall Hoffman)

The Stevens County Board of Commissioners unanimously approved a resolution at their meeting yesterday supporting a Capital Assistance Program grant for Pope/Douglas Solid Waste to create a unified waste recovery and recycling system at their Alexandria facility that would upgrade their operation and make it viable for the next 30 years. The Solid Waste operations' Steve Vrchota told the Board that their Household Waste and Recycling Center is seeing 36,000 customers a year in a space that was designed for a couple of thousand.

"We're basically outgrowing our current facilities," said Vrchota. "I came into this position about two and a half years ago and our County Board from Pope and Douglas said, 'How do we keep this facility running for the next 30 years?' Basically, they asked me to put a plan together and 'How do we fund it? How do we make that happen?' Part of that is to be able to get some CAP money to be able to make the system whole again and be able to run for another 30 years."

Their waste operations serve seven counties. They are also seeking support for a regional organics composting facility that would serve the five county area. The projected cost for the upgrades is \$18.9 million, which would include \$8 million in state aid. Vrchota said the Governor's office has been supportive of the project and has put it as one of their top two projects in the state to fund.

### Stevens County Board Support

## Pope/Douglas Solid Waste looking to expand: Plans approved by Douglas County commissioners

Pope/Douglas Solid Waste Management receives approval for its \$18.9 million expansion, upgrade project

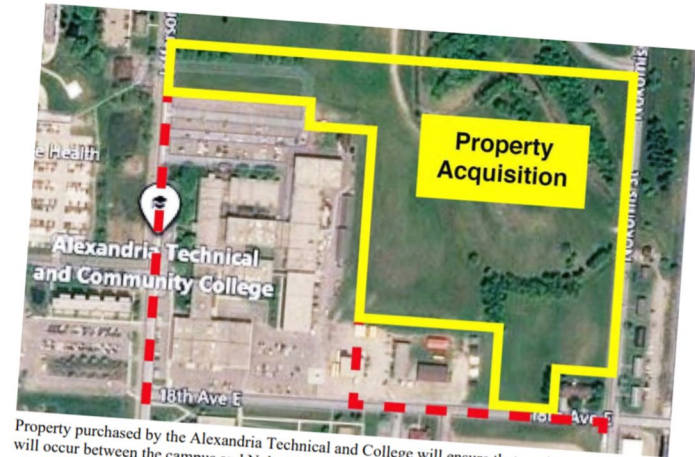
Written By: Celeste Edenloff | Oct 4th 2019 - 8am. - Echo Press



Pope/Douglas Solid Waste Management Director S... information to the Douglas County Board of Comm... changes to the solid waste facility at Tuesday's reg... (Press)

## In the Know: Stars align for ATCC's land purchases

Feb 19th 2020 - 11am. - Echo Press



Property purchased by the Alexandria Technical and College will ensure that no development will occur between the campus and Nokomis Street (the far right of the map). (Contributed map)

By Michael Seymour, ATCC President

In over 20 years as a college administrator, I have been involved in less than a handful of once-in-a-lifetime business decisions. These are strategic opportunities that college leaders seize from

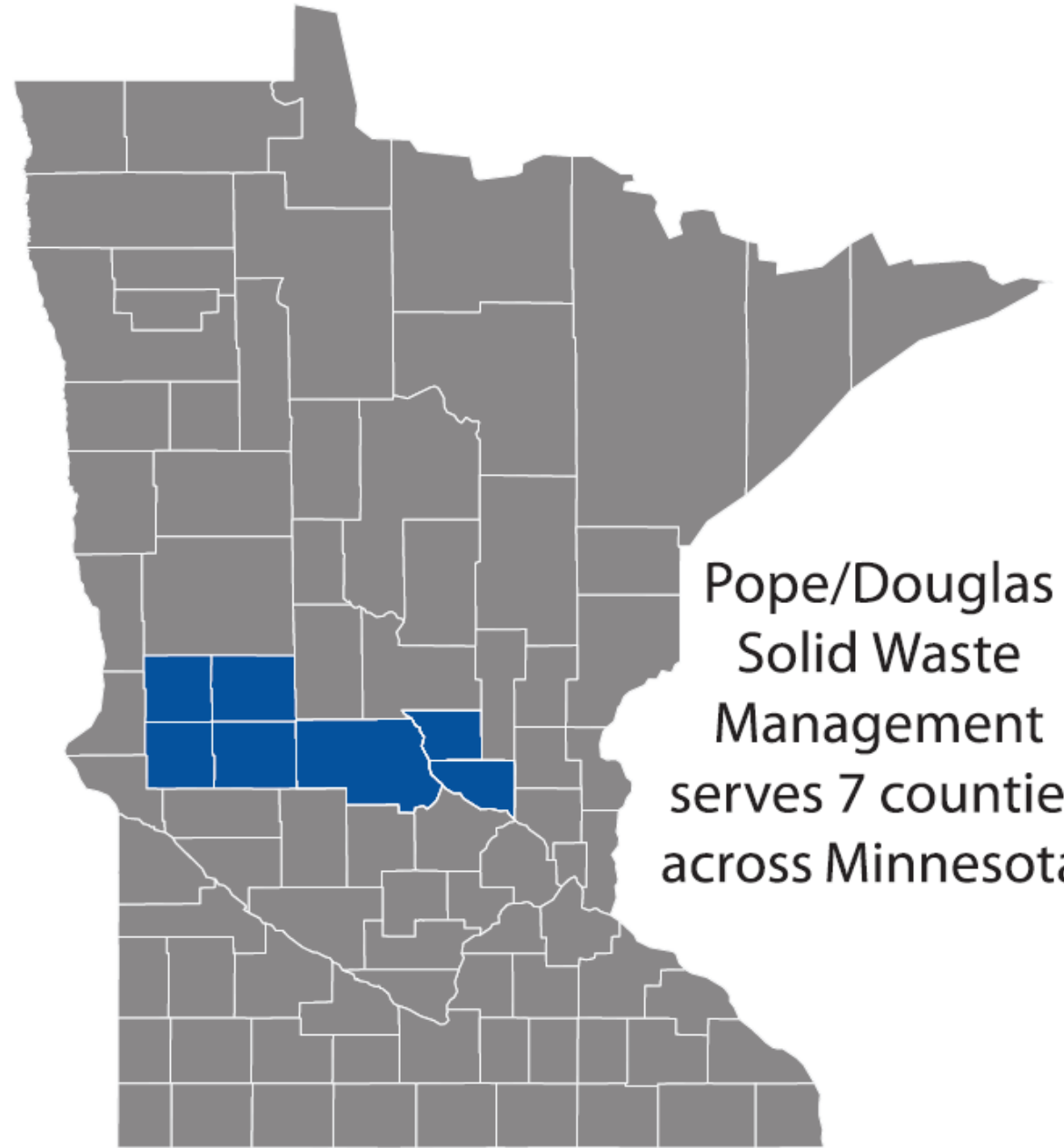
# Operations Plan and Funding

- Long Term MSW delivery agreements
  - Grant (2031)
  - Stevens (2031)
  - Tri-County North (2031)
- Waste Designation (2021)
  - Pope & Douglas local haulers
  - Hauler Delivery Agreements (2021-2031)
- Increase Service Fee to support bond payments (2019)

# Champions

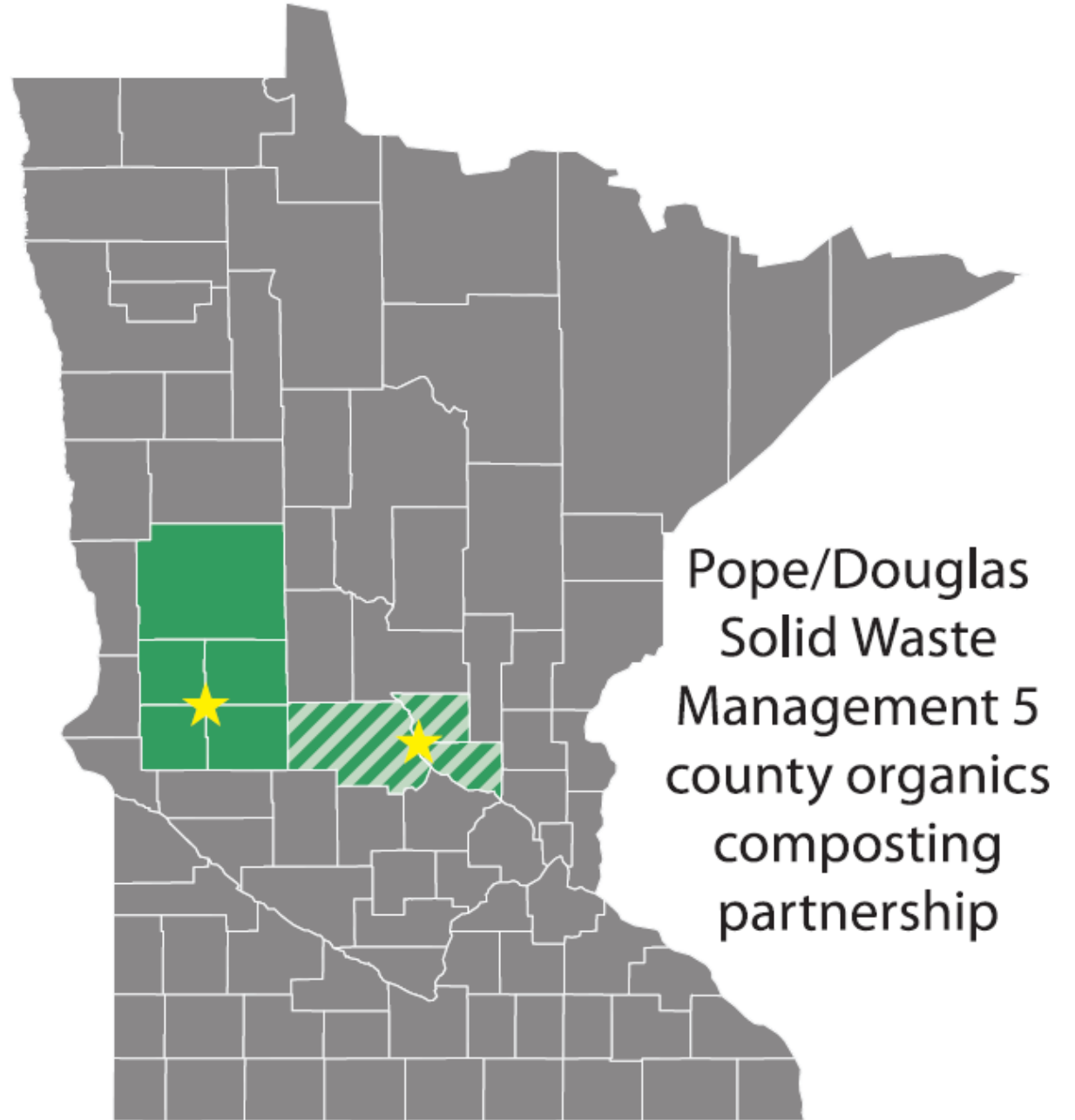
- Regional Counties and Local Government
- Governors Plan (MPCA or MMB)
- Bill Authors in House and Senate
- Key Businesses
- Lobbyist to guide the process

MSW Regional  
Coordination to  
recover more and  
landfill less



Pope/Douglas  
Solid Waste  
Management  
serves 7 counties  
across Minnesota.

Organics Regional  
Coordination to  
compost *more* and  
landfill/burn *less*



# CAP Interest



- Submitted CAP Interest Forms
- Utilized Long-Range Plan to support plan and funding needs
- Meet with MPCA
  - Jeannie and our MPCA liaisons
  - Demonstrate project need to be included in MPCA MMB request



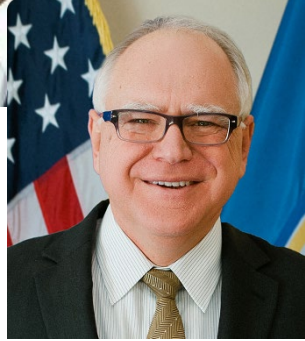
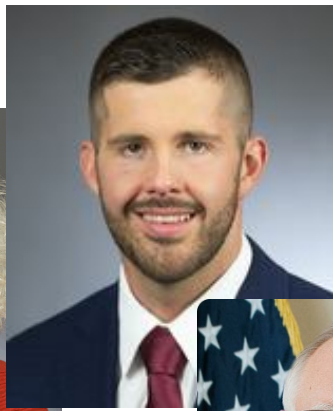
# Networking and Marketing

- Meeting Partners and finding Bill Authors
- Meeting with Capital Finance Committees from the House and Senate and scheduling tours
- Site Visits and Hearings
- It is a Competitive Process and they need to Remember your Name and the Project



MINNESOTA  
RESOURCE  
RECOVERY  
ASSOCIATION  
Yesterday's Waste... Today's Energy

Partners!!!!



# Network and Rub Elbows

- Clean Energy Harvest Panel –
- Sustainable Cities & Transportation Roadshow –



# After Approval

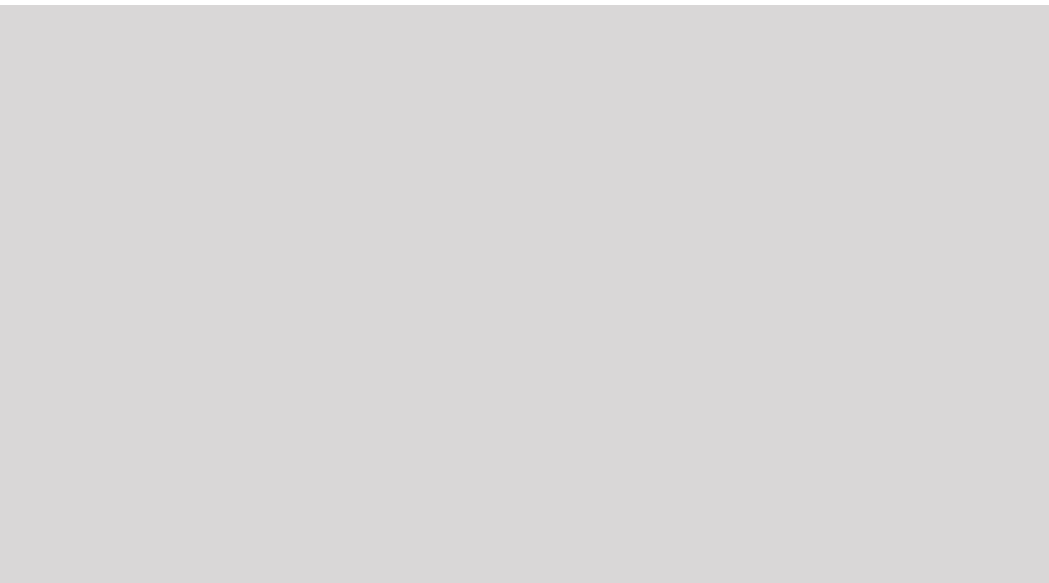
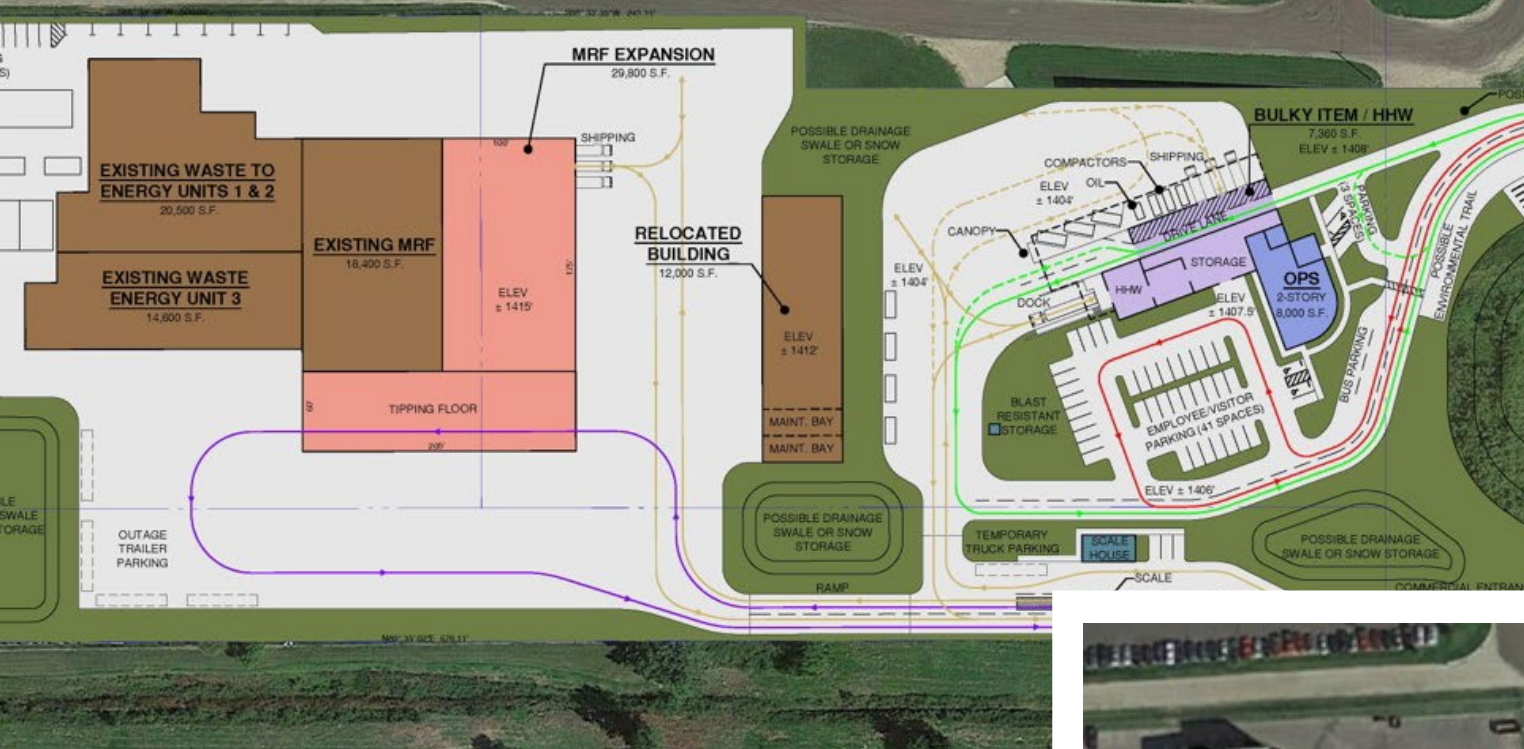
- CAP Final Application
- Finalize Bonding to provide local match
- Prevailing Wage requirements
- Final Design and Engineering
- Construction Bidding and Management



# Implementing – Phase I

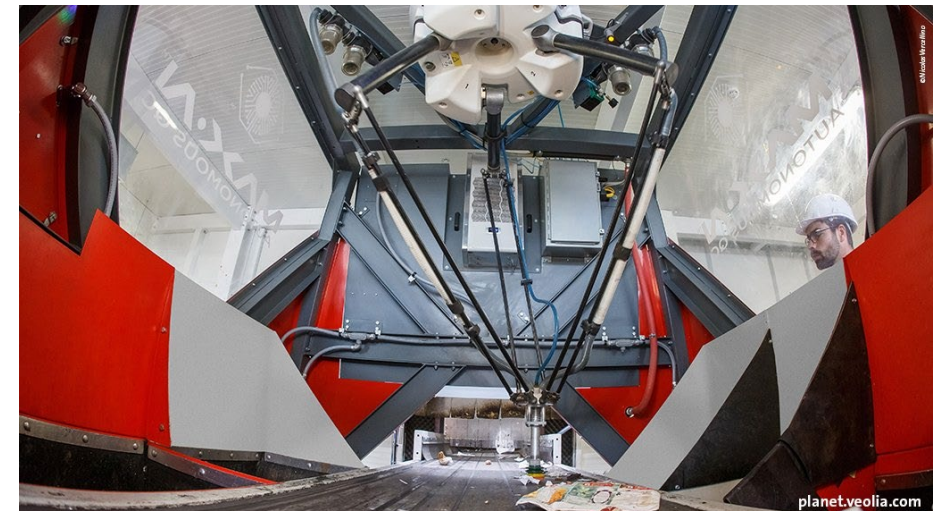
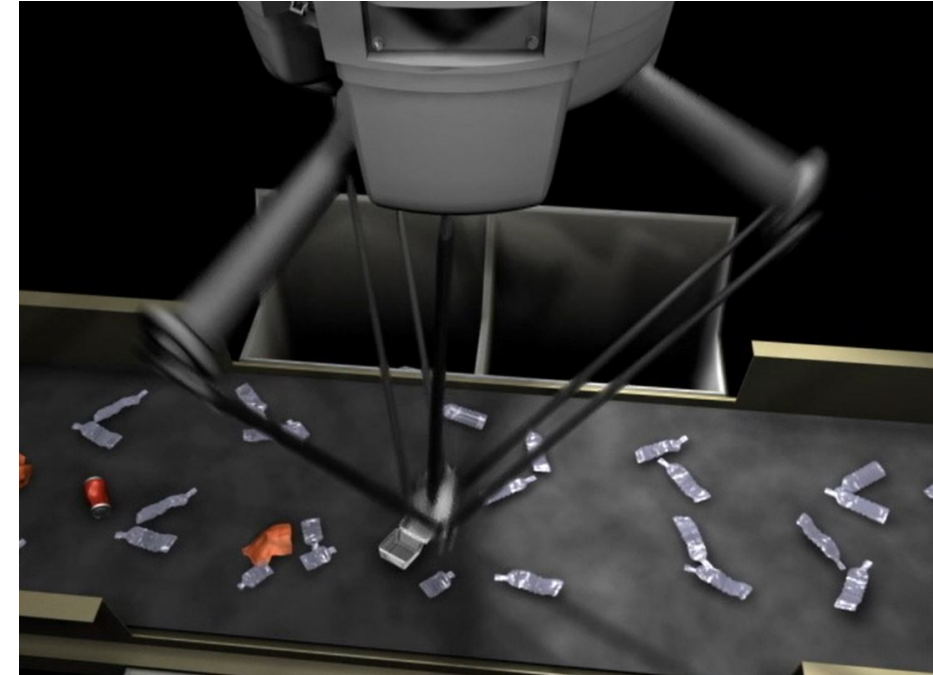
- Environmental Center
- Scale House/Shipping & Receiving
- Maintenance Shop/Storage
- Truck Routing on Site
- Glacial Ridge Compost Facility





# Implementing – Phase II

- Advanced Material Recovery Facility
  - Hybrid MRF able to switch between 'dirty' front-end processing MRF (removal of metals/plastic/OCC/problem items) and Single Sort MRF
  - Expanded Tip Floor - Existing floor was designed for 40% of current incoming MSW



# Special Thanks

- Jon Steiner – Original architect of the communication plan and helped us learn from his mistakes
- Jeannie Given – Helping us walk through the MPCA CAP Program