

REUSE CENTERS 101

PANEL DISCUSSION

JOSH HOLTE, HUBBARD COUNTY SOLID WASTE ADMINISTRATOR

HUBBARD COUNTY SOLID WASTE OVERVIEW

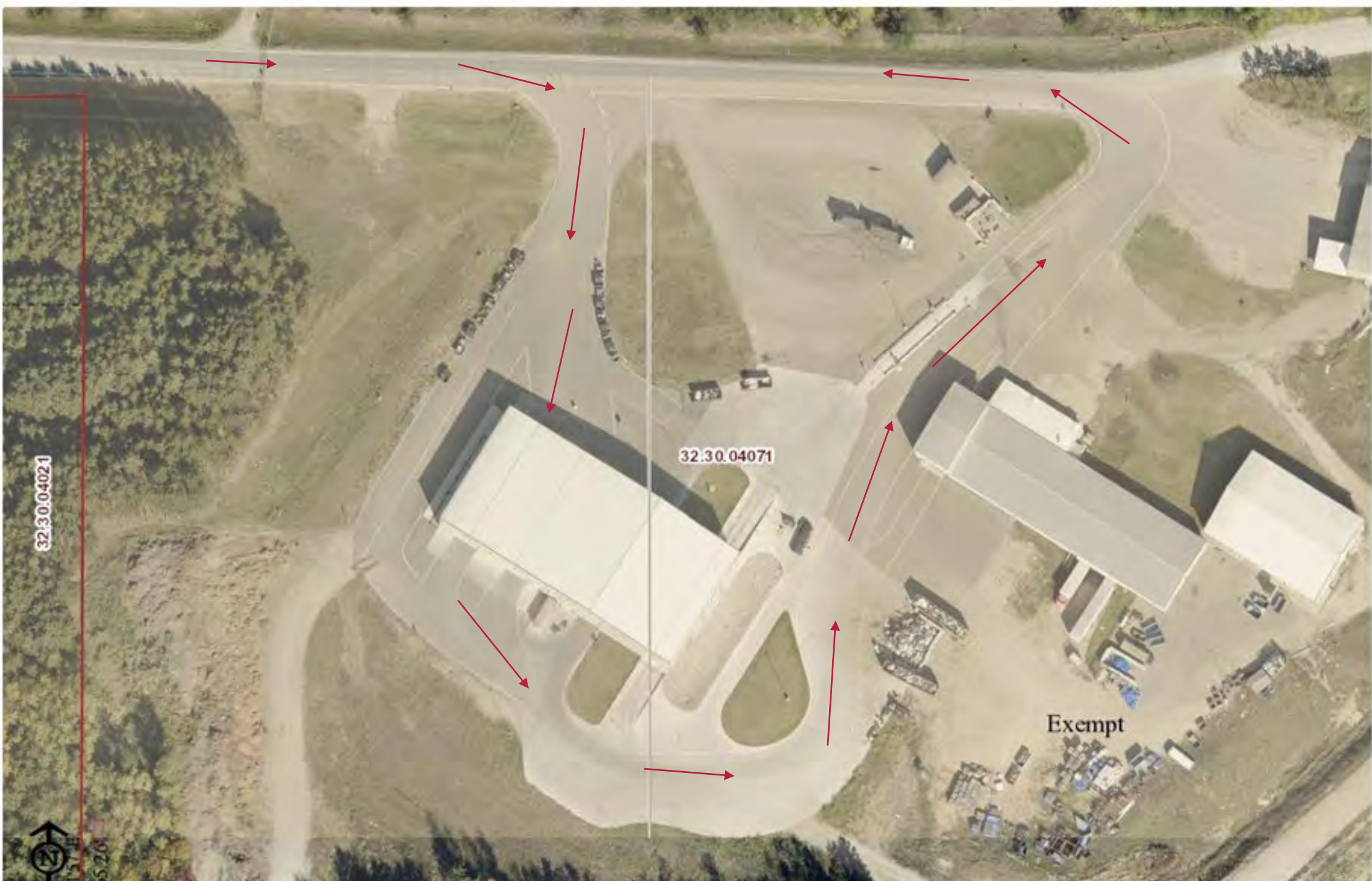
- Hubbard County South Transfer Facility (MPCA Permit # 318)
 - Park Rapids
 - 60 Acre Site (14.5 Acre Demolition Landfill) – Opened in 1988
 - Transfer Station and Recycling Center
 - CAP Project – New Transfer Station opened in July 2019
 - Annual Waste Volumes
 - 12,000 tons MSW
 - 2,000 tons Mixed Recycling
 - 10,000 Cu.Yards C & D

HUBBARD COUNTY SOLID WASTE OVERVIEW

- Hubbard County North Transfer Facility (MPCA Permit #315)
 - Laporte
 - 80 Acre Site (8 acre Demolition Landfill - Opened in 1987)
 - Transfer Station
 - Annual Waste Volumes
 - 4,000 tons MSW
 - 2,000 Cu.Yards C & D

HUBBARD COUNTY SOLID WASTE OVERVIEW

- Solid Waste Assessment - \$153 residential/Commercial Varies by volume
- No Tipping Fees for residential
- High residential traffic volumes – Park Rapids – 500 to 1,000+ vehicles per day
- Seasonal Impacts – Tourist/Seasonal Increased Volumes



32.30.04021

32.30.04071

Exempt



5-20







REUSE PROGRAM HISTORY

- Pre 2019 – No designated reuse area, but a lot of salvaging....set good material out front.
- With new transfer station created the reuse area out of concrete barriers.
 - Would direct residents to place good items in reuse area, and in the summer time inventory flips every day or two.
 - Pros – Reusing a lot of material mostly destined for MSW landfill
 - Cons – Don't have a good way to measure/get metrics

REUSE BUNKER



ENVIRONMENTAL ASSISTANCE GRANT

- Project Kickoff Anticipated for Spring 2021
- Three Phase Project (\$318,295 Total Project)
 - Recycling Compactor – North Transfer Station
 - Expand Commercial/Single Sort Recycling in Hubbard County
 - Promote C & D Reuse at both Transfer Stations

ENVIRONMENTAL ASSISTANCE GRANT

- C & D Reuse Project
 - Purchase low sided roll-off containers for each facility
 - Place containers next to C & D working face to collect/sort reusable C & D material
 - Place full container in reuse areas to allow greater reuse of C & D material, diverting it from the demolition landfill
 - Keys to Success
 - Metrics – Have measurable outcomes by tracking material in roll-off containers
 - Education & Outreach
 - Staff Training
 - Keep it Simple

FUTURE REUSE PLANS

- Keep program simple/minimize staff time
- Possibly utilize old transfer station for indoor reuse area
- Keep promoting reuse to residents of County and County staff!

THANK YOU!!!!

JOSH HOLTE, HUBBARD COUNTY SOLID WASTE ADMINISTRATOR

Josh.holte@co.hubbard.mn.us

(218) 732-9568